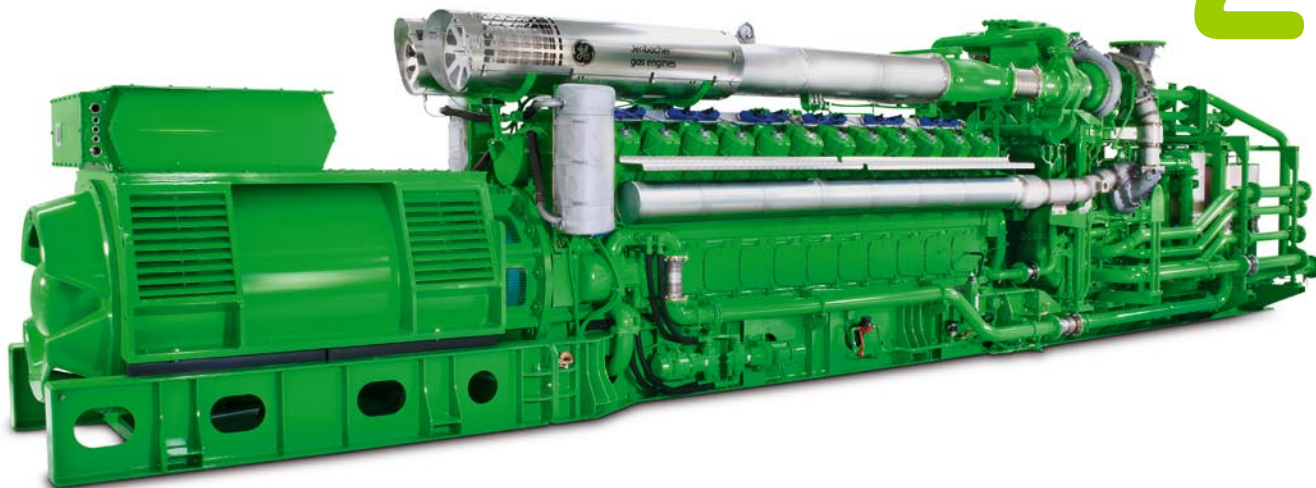


Jenbacher J624

2-stage turbocharged

Game-changing gas engine technology.

2



Product highlights

- 4.4 MW electrical output
- 46.5% electrical efficiency
- 24-cylinder @ 1,500 rpm
- Proven compact design

Customer benefits

- Up to 90% total efficiency
- Improved power density by 10%*
- Full output at high ambient temperature and altitude
- Low specific fuel consumption
- Low installation and operating costs

Announcing the world's first 2-stage turbocharged gas engine – GE's new Jenbacher J624. A new level of engineering excellence, the J624 offers you significant advantages, particularly in the area of multiple engine power plants for independent power generation and combined heat and power (CHP) solutions.

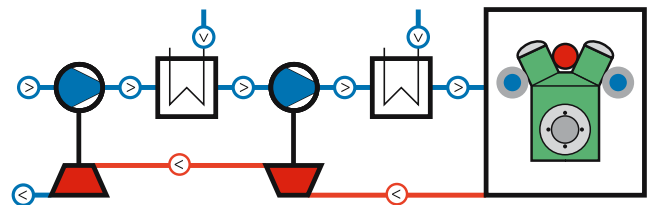
* Compared to single-stage turbocharged versions



GE imagination at work

Benefits of a 2-stage turbo

While all gas engine applications work well with our new fuel flexible turbocharged J624 engine, there are two areas where you'll find it excels – large power generation projects, including multiple engines, and CHP or cogeneration solutions – making the new J624 more economically practical than gas engines with single-stage turbocharging.



2-stage turbocharging concept

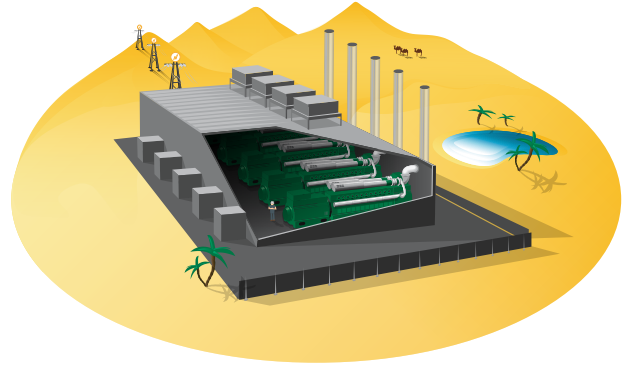
For Power Generation

Customer benefits:

- 46.5% electrical efficiency
- Full output and efficiency at high ambient temperatures
- High power density
- Ease of transportation and installation
- Low operating and maintenance costs

Ideal for flexible power:

- Fast start-up time (5 minutes)
- Low start-up costs
- Highest part-load efficiency with multi-unit concept



Multiple Engine Concept

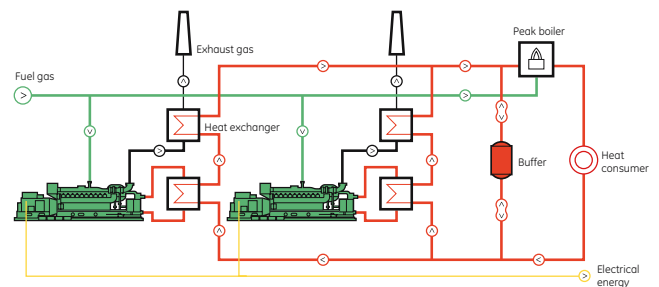
For Cogeneration (CHP)

Customer benefits:

- Up to 90% total efficiency
- ~4.1 MW thermal output (70/90°C)

Ideal for district heating:

- Highly integrated system
- Minimal installation costs
- Flexible and modular design



Key technical data

GenSet dimensions l x w x h (m)	12 x 2.2 x 2.6
Weight (ton)	45
Speed (rpm)	1,500
60 Hz version	with gear box design
Bore / Stroke (mm)	190/220
Applicable gas types	natural and non-natural gas

Interested? For more information, please contact your Jenbacher gas engine Sales contact or visit our website at www.gejenbacher.com.

Efficiency performance is based on a new unit with a tolerance of +5% (DIN-ISO 3046 and DIN 6271) at the test bench or immediately after commissioning. Effects of normal degradation during operation can be mitigated through regular service and maintenance work.