

GE  
Energy



# Vacuum Cleaner Filtration

ePTFE Membrane Technologies



GE imagination at work

We specialize in customer driven applications where innovation and quality are essential. A balance of high filtration efficiency, low pressure drop, high air flow, regenerability and consistent quality form the cornerstone of our Vacuum Cleaner Filtration Products.

**Value Proposition:**

ePTFE membranes and laminates specifically developed for vacuum cleaner applications provide filter and bag manufacturers with a HEPA-rated regenerable media that optimizes vacuum performance. No other media performs like ePTFE.

**Applications:**

- Dust Cup Filter Cartridges  
Upright & Canister
- Vacuum Cleaner Bags  
Upright, Canister & Central
- Exhaust Panel Filters  
Upright & Canister

**Advantages:**

- HEPA-rated
- Washable
- Regenerable
- Easy to Clean

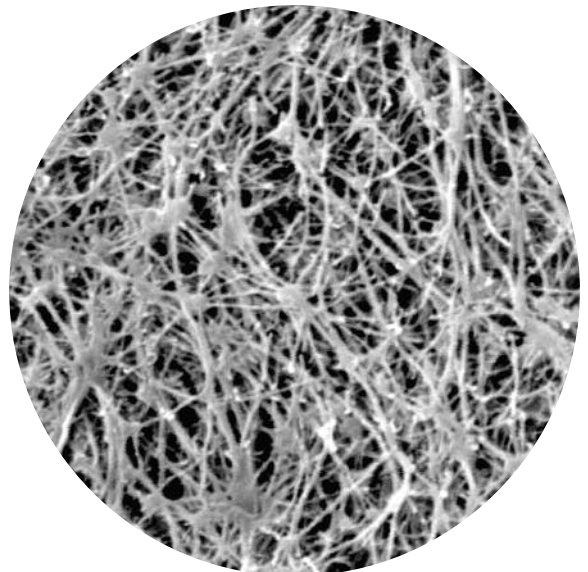
# What is ePTFE?

Inherently hydrophobic (water resistant) and non-stick by nature, ePTFE is made by *expanding* polytetrafluoroethylene resin into a three-dimensional, web-like structure. This process creates billions of microscopic pores, which allow air to pass easily through while the membrane structure itself collects particulates as small as 0.1 micron on its surface.

## Meets or Exceeds Industry Standards *without sacrificing vacuum cleaner performance*

- ASTM F1977-99
- IES-RP-CCO21.1
- EN1822 test criteria for HEPA ratings (H11 – H14)

Magnified photo of ePTFE, showing the microscopic pores created in a weblike membrane.

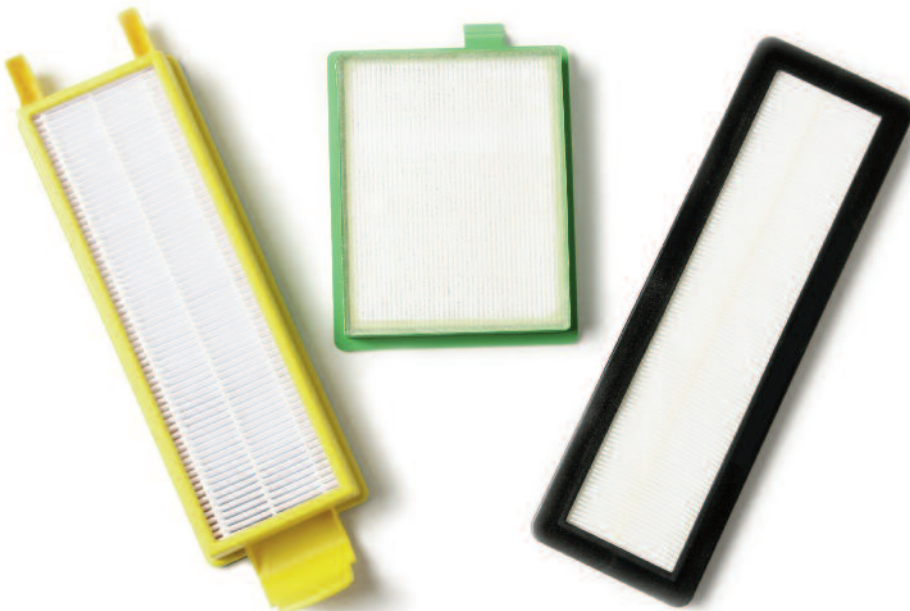


# Quality Control

Our laboratories are equipped to perform a wide variety of testing, evaluation and quality control activities in accordance with internationally recognized standards (ASTM, ISO, AATCC, JIS and DIN). Where standards have not been established, we develop rigorous test protocols with stringent quality controls. GE also utilizes independent laboratories that perform third-party testing and validation services. We are ISO 9001-2000 certified, and an industry recognized supplier of ePTFE products.

# Application Development

Our application development process is designed around your needs. GE's multi-faceted development group is comprised of scientists, engineers, technicians and industry experienced professionals—all dedicated to delivering customer-focused results.



# GE's ePTFE Technologies for Vacuum Cleaner Applications Deliver:

- HEPA-Rated Filtration
- Regenerable Performance
- High Efficiency
- Low Pressure Drop

## With an Applications Team Ready To:

- Custom-Design Laminates for Optimized Fabrication
- Provide Technical Support for Your Application

8800 East 63rd Street  
Kansas City, MO 64133 USA  
T: 800.391.0686 / 816.356.5515  
F: 816.246.9592

Balsthalerstrasse 1  
P.O. Box 34  
4717 Muemliswil, Switzerland  
T: +41.62.386.7733  
F: +41.62.386.7744

525 Si Chuan Bei Lu  
Suite 2005-2007  
Shanghai 2000085 China  
T: +86.21.6357.7100  
F: +86.21.6357.5727



©2008 General Electric Company. All Rights Reserved

Specifications and performance are subject to change; results may vary in your application. Please contact GE Energy to discuss your needs before purchase.

GEA-14122A (07/08)